

# SAND POND SPUR OF BEAVERKILL RANGE <sup>8/24/199</sup>

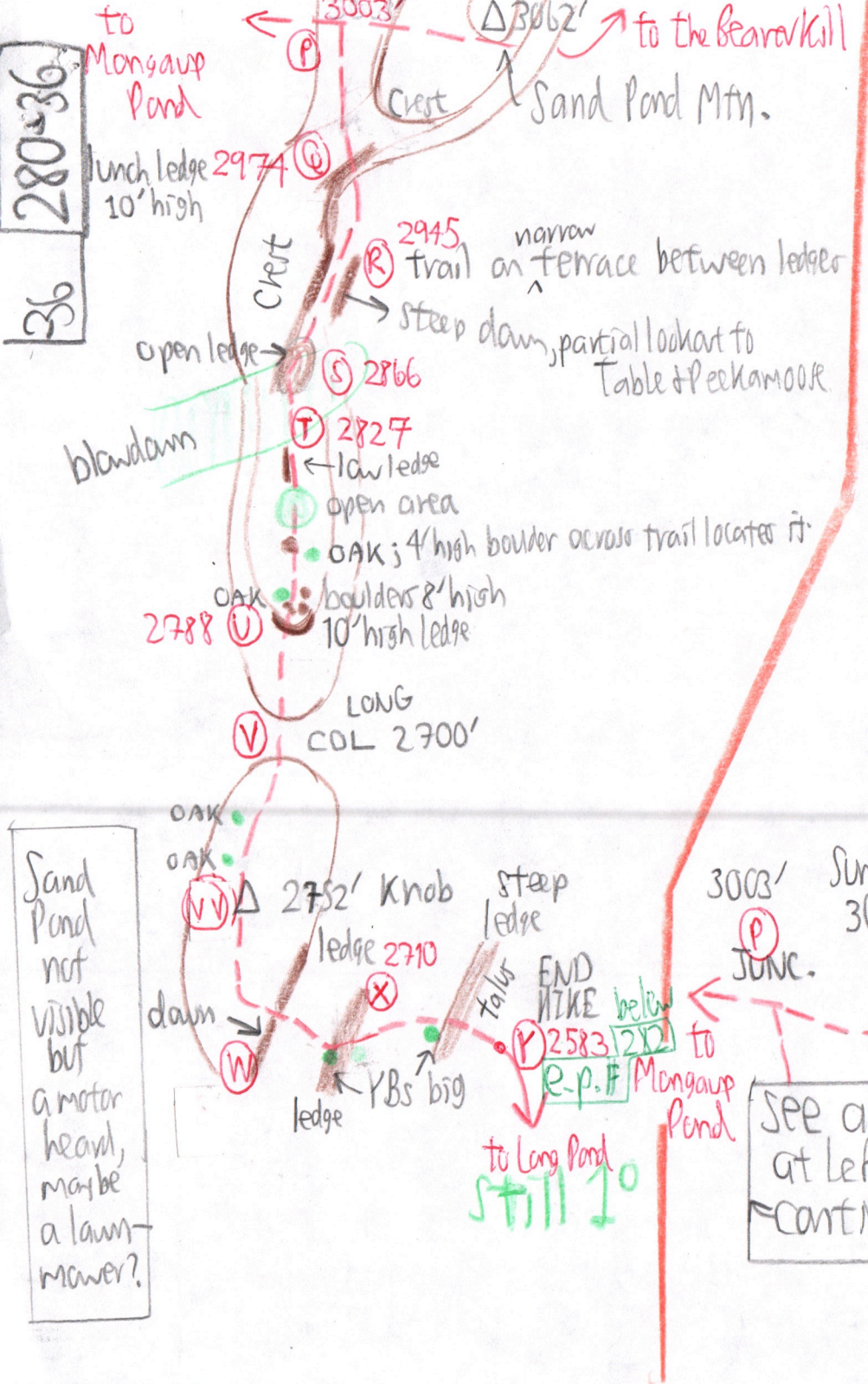
The Long Pond-Mongaup Trail follows this spur

280-35

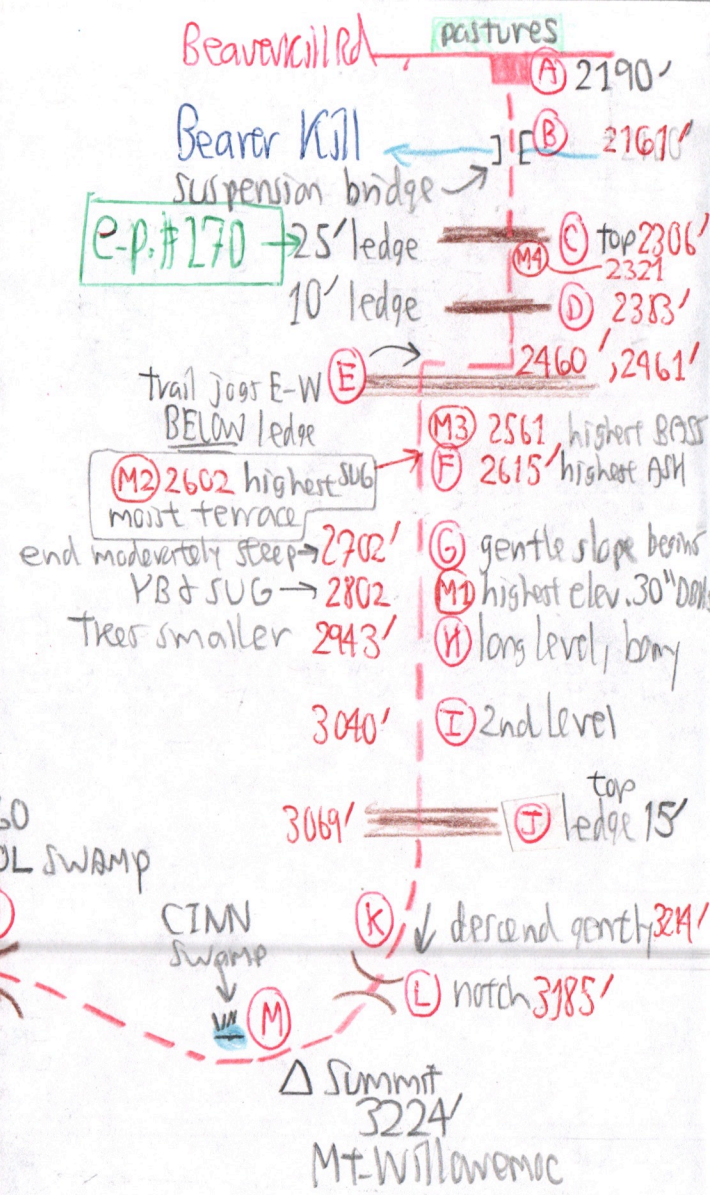
Location	P	Δp	Δe	e calc	e map	time up	down time	R
(A) B'kill Trail Head (See below for detail on Hardenbergh-Mongaup Trail)	29.80	0			2190	9:30	3:29	$\frac{3224-2190'}{29.80''-28.73''}$ $= \frac{1034'}{1.07''}$ $= 0.966$
(M) Summit 3224'	28.73	1.07			3224	10:30	2:15 to 2:33	
(N) Col swamp	29.20	0.60			2760	10:52	1:48 to 1:53	
(O) Summit 3062'	28.88	0.37	362	3062	3062	11:08	1:31	
(P) Junction	28.94	0.31	303	3003		11:10	1:28	$\frac{3062'-2700'}{29.25''-28.88''}$
(Q) Lunch ledge	28.97	0.28	274	2974		11:15-11:40	1:22 to 1:25	
(R) Parallel ledge; partial lookat	29.00	0.25	245	2945				$= \frac{362'}{0.37''}$
(S) Blowdown top	29.08	0.17	166	2866			1:15	
(T) Blowdown base	29.12	0.13	127	2827			1:08	$= 0.978$
(U)	29.16	0.09	88	2788				
(V) COL	29.25	0.00	0		2700	12:06	12:53	
(W) Knob 2752'	29.19	0.06	59	2759	2752	12:13	12:40	
(X) Ledge top	29.24	0.01	10	2710				
(Y) end hike, base of steep talus pitch <span style="border: 1px solid green; padding: 2px;">e-p #282</span>	29.37	-0.12	117	2583			12:23 → 12:33	

(A) B'kill trail head	29.80	0.00	—	—	2190	9:30 AM		See page 280-38 for DOWN HIKE PRESSURES  $\frac{3224-2190'}{29.80''-28.73''}$ $= \frac{1034'}{1.070''}$ R = 0.966
(B) Suspension bridge	29.83	-0.03	-29	2161				
(C) Ledge <span style="border: 1px solid green; padding: 2px;">e-p #170</span>	29.68	0.12	116	2306				
(D) 2nd Ledge	29.65	0.20	193	2383				
(E) 28" ASH, SUBS 30ft trail Jogs W	29.52	0.28	270	2460				
(F) 8" ASH	29.36	0.44	425	2615				
(G) gentle slope	29.27	0.53	512	2702				
(H) long bony level	29.02	0.78	753	2943				
(I) 2nd level	28.96	0.88	850	3040				
(J) top 15' ledge	28.87	0.91	879	3069				
(K) descend gently	28.74	1.06	1024	3214				
(L) notch	28.77	1.03	995	3185				
(M) Summit 3224'	28.73	1.07	1034	3224	3224	10:26	10:30	





Compare  
Calculated  
elevations  
with  
earlier  
hikes  
p 280-3



See above  
at left for  
continuation

Sand Pond  
not  
visible  
but  
a motor  
heard,  
maybe  
a lawn-  
mower?



Location Trees Grand Cover

280-371

(C) Prob. 1° already  
 (D) Certainly 1°  
 (E) one 28" ASH  
 SUGs to >30"  
 (F) 8" ASH  
 (H) More BC, bony  
 (I) BCs to 24"

More detail see over

e-p-H170  
 OX-LL-\$

(N) COL SWAMP  
 Ledge only 2" to 6"  
 down, not worth  
 coming.

Royal fern, MC  
 CIMM, Sphagnum  
 Juncus  
 ILEX VERT ✓  
 Calamagrostis  
 opposite-leaved  
 mystery herb

(R) MO<sup>YB</sup>  
 dead 24" SUG by

OX-LL-\$ Camoyl  
 RS-UVUL-M

(S) to (T) big YB.  
 Blowdown by SW  
 wind span 2  
 ledges. 24" BCs  
 fell to NE, pulling  
 up cakes 18 and  
 30 inches thick.  
 Dead lvs on fallen  
 B+SUG suggest  
 blowdown in summer 198??

See  
 notes  
 pp. 280-27  
 to 31  
 for blowdown  
 2 ridges to  
 the west.

(U) 26" oak on E ✓  
 17" oak on W ✓  
 BC & YB leaf drop  
 because of drought

Ilex mont ✓  
 Hamam ✓  
 OX, \$, Mitch

(V) long col, boulders  
 ledges. SUG scat to 10"

Ilex mont ✓

(VV) BC dam on crest, 50' to 60'  
 BC 27 1/2" on N  
 slope at 2752' knob.  
 RM 26±"  
 scat SUG

One BASS  
 with  
 OAKS ✓

(VV) Two big Beech  
 on W, 25" DBH  
 measured, live & hollow  
 4 OAKS on West  
 shoulder of (VV),  
 12" to 18" with ✓  
 across on ground

(W) Drought-dead RA on Folist  
 BC-B-YB-RM dam  
 to 45' x 18"

(X) YB mid-ledge 27"  
 BC 25"  
 B smaller to 14"±  
 B-BC dam

(Y) YB top of ledge  
 27"  
 On talus, two SUGs  
 broken off at 6' up,  
 27" & 29".  
 At base of talus,  
 SUGS 29" & 30" x 80' tall  
 OST common  
 BASS 12" & 18"

end hike below talus; 1° continues  
 down trail with no end in sight.



More elevations, A to M on descent

280-38

A	29.73	0.00	—	—	2190	3:29	Trail head
M4	29.60	0.13	131	2321			One small VA patch - the only one + Beaver kill still audible
E	29.46	0.27	271	2461			Trail jog E-W
M3	29.36	0.37	371	2561			BASS on W ±26"
M2	29.32	0.41	412	2602			highest elev mont. tawale: SUB-ATHENO LAP, TIAR, GAL, CAUO, ARTI, EUP
M1	29.12	0.61	612	2802			highest elev. big 30" trees: SUB+YB on this north slope
M	28.70	1.03	1034	3224	3224	2:33	Summit 3224'

seen all day!

$$\frac{3224' - 2190'}{29.73 - 28.70''} = \frac{1034'}{1.030''} = 1.004$$